

## Rubber Weatherstrips – One-Piece Self-Sealing Weatherstrip Installation Instructions

**1X** – Start along side or top of window opening. Fit body channel of weatherstrip over body panel edge. Continue strip around perimeter or window opening. Cut strip to overlap starting point by 1/8" per foot of window opening perimeter. Bring ends of strip together and force over the body panel. This will assure a tight joint.

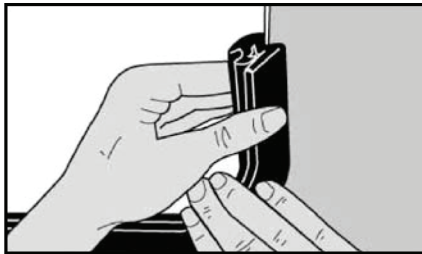
**2X** – To ease entry of glass and prevent possible cutting of rubber, apply a solution of rubber lubricant or soap and water, with a small brush, to the locking lip and glass channel. This facilitates insertion of the locking tool and final locking operation.

**3X** – Starting in lower corner, insert glass panel into channel as far as it will go without forcing. Then with straight end of locking tool (or plastic spatula), lift glass channel lip so that glass slips easily into glass channel.

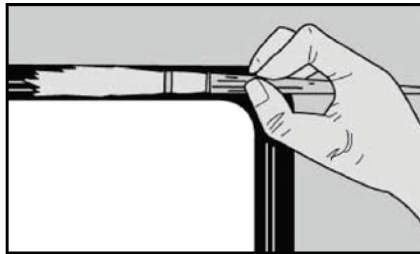
**4X** – This cross-sectional view of StanPro weatherstrip shows how locking tool is inserted and used in locking glass panel and metal edge of body. Locking tool may be inserted between locking lip and its groove, at any point, away from strip joint.

**5X** – When rounding corners, continue moving the locking tool around the corner. This is easily done and should lock strip without buckling rubber.

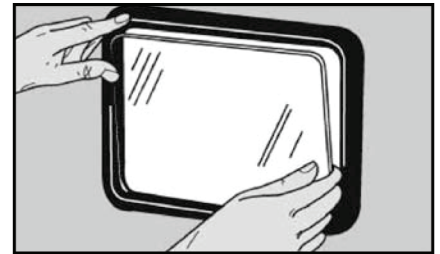
**6X** – Completed assembly results in a clean and smooth installation, with perfectly formed corners, for permanent weather-proofing of windows, windshields, or panels.



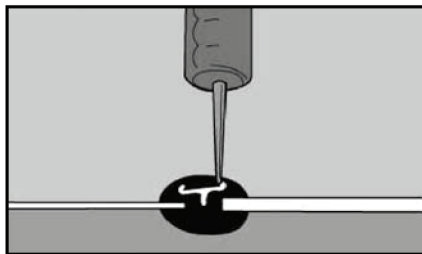
1X



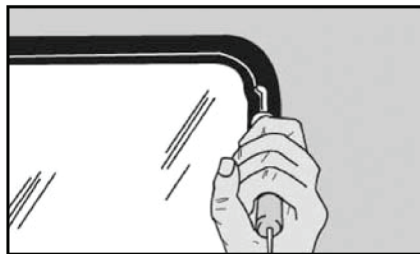
2X



3X



4X



5X



6X